



**Quality of service Team**

**Drive Test Results for Mobile Operators GSM Networks in Madha.**

**Carried on 7<sup>th</sup> April 2012**

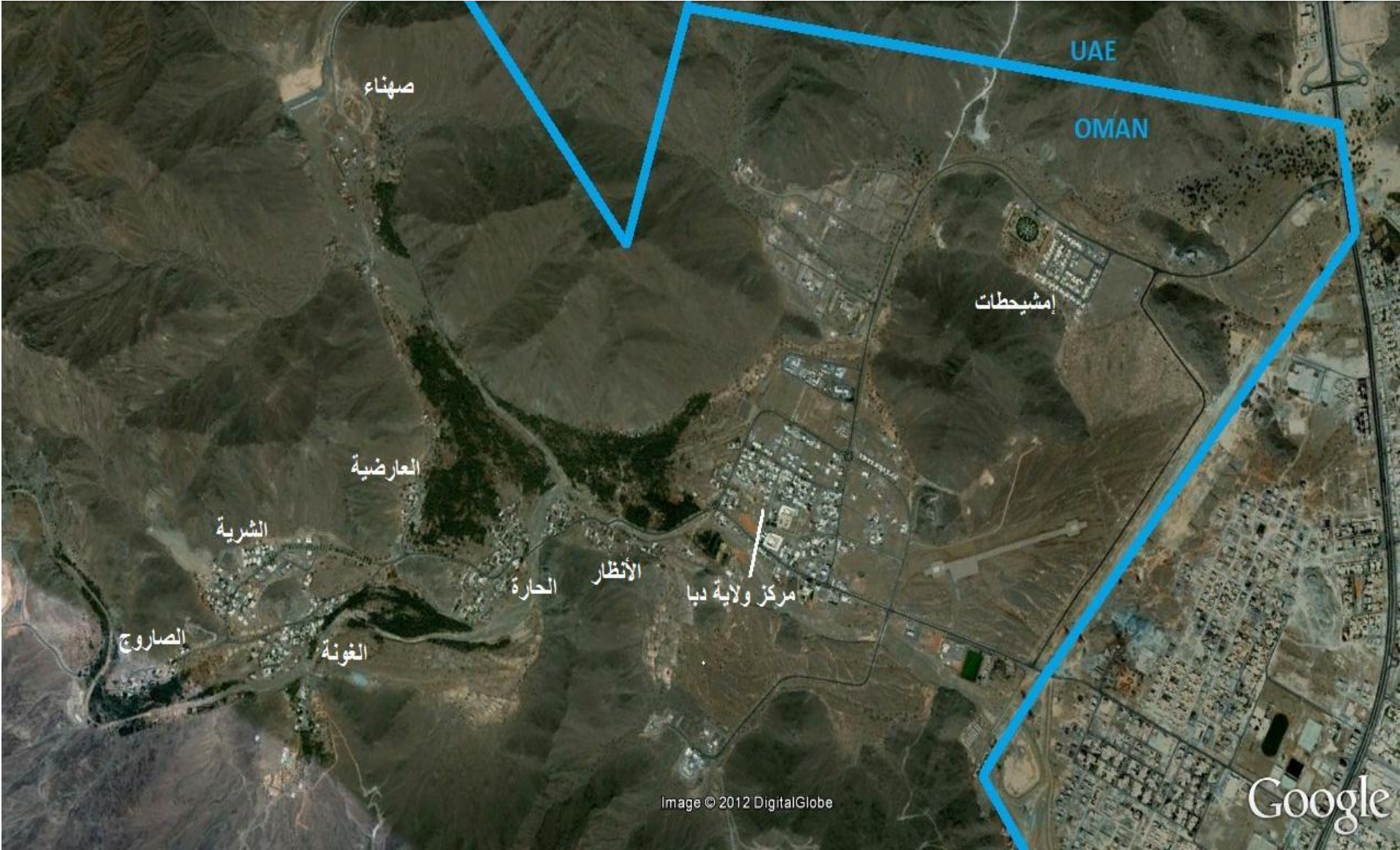
## Drive Test Considerations

- Conducted by:** Telecommunication Regulatory Authority, Quality of Service Team.
- Locations:** Willayat's of Madha.
- Test time:** 10:00 AM-4:00PM, 7<sup>th</sup> April 2012.
- Test Equipment:** TEMS™ Investigation 11.0, two sets of Sony Ericsson W995 handsets.
- Test Mode:** The test had been conducted in 2G-dedicated mode with a configuration of repeated sequential calls.

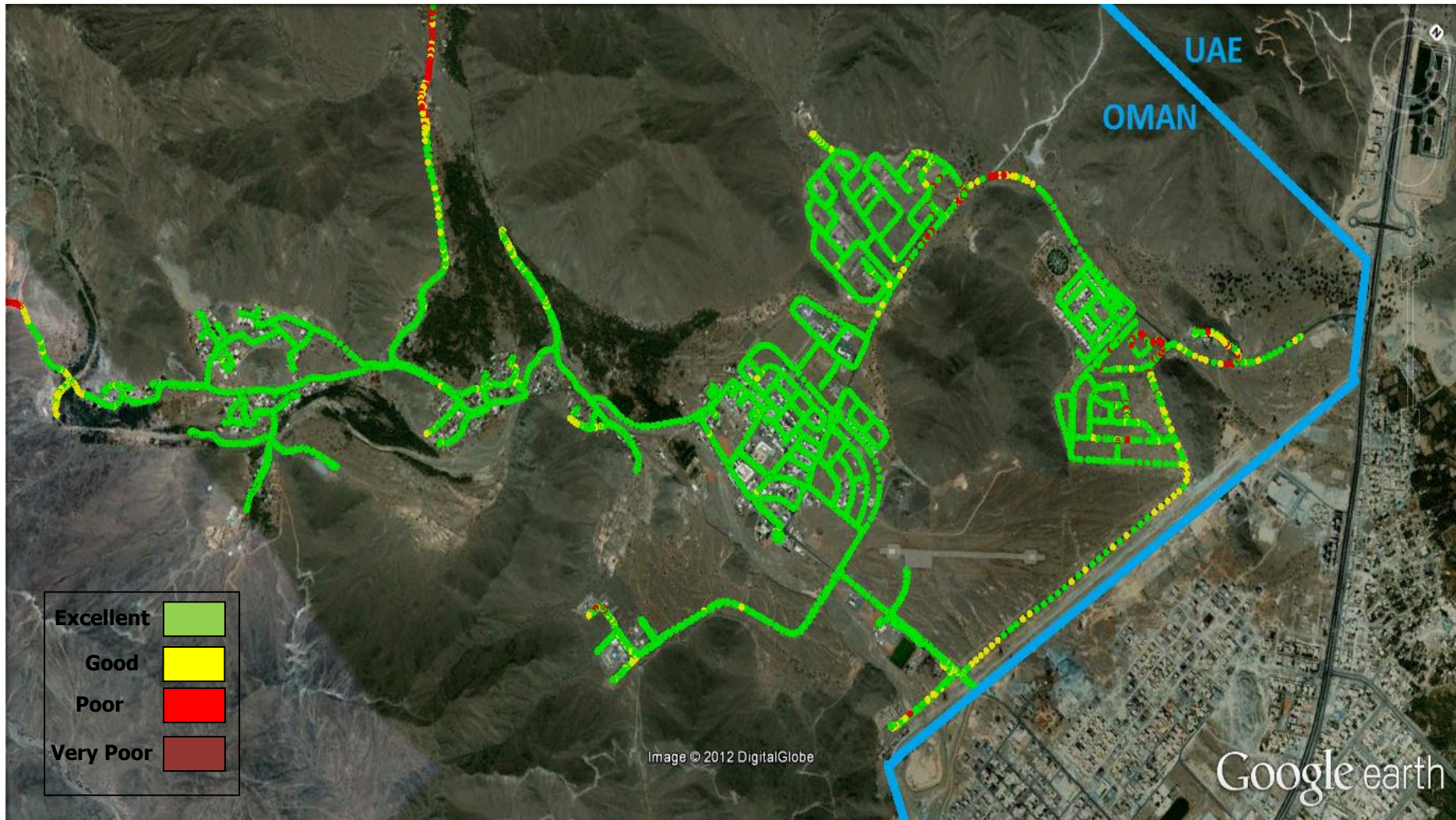
### **Note:**

The quality of service of any mobile network is assessed by a set of quality of service Key Performance Indicators (QoS KPIs), and do not depend only on the received signal level strength.

Map of Madha



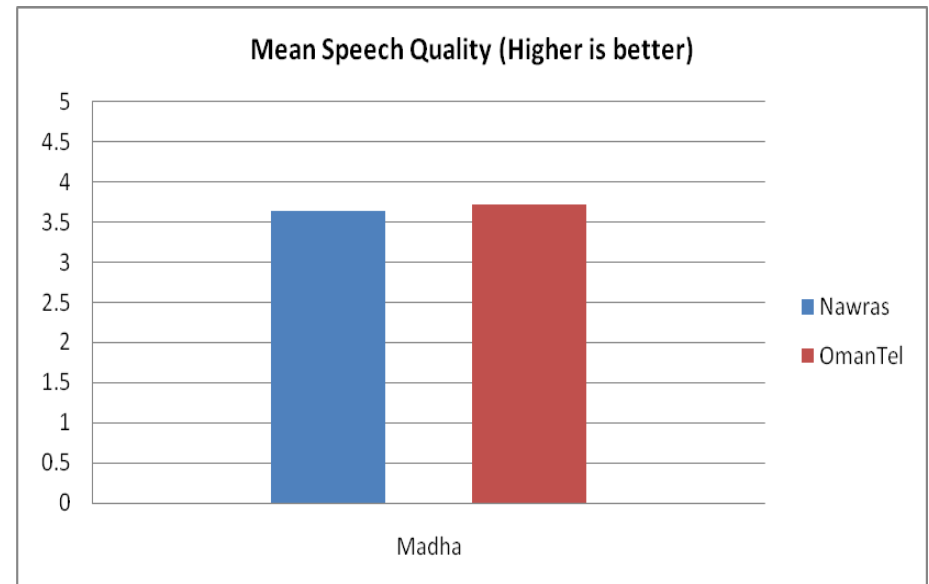
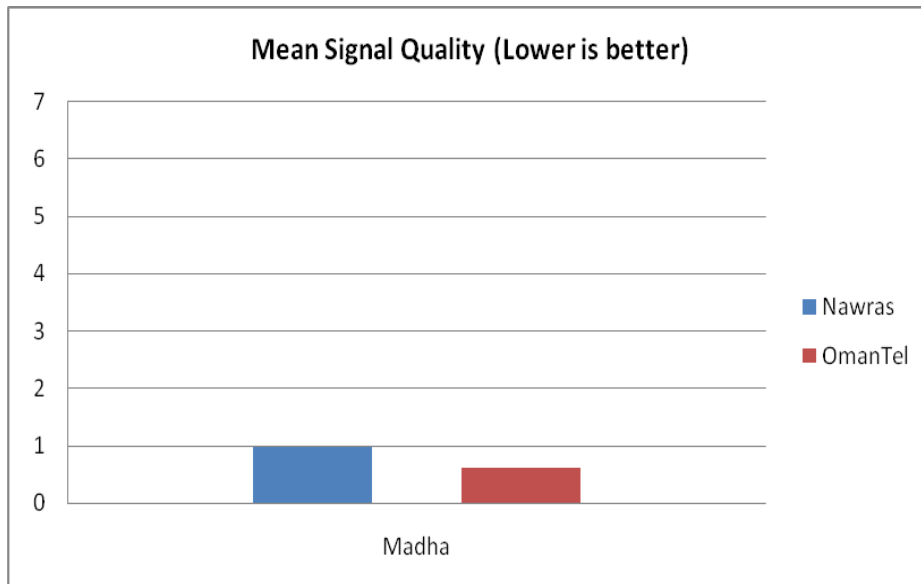
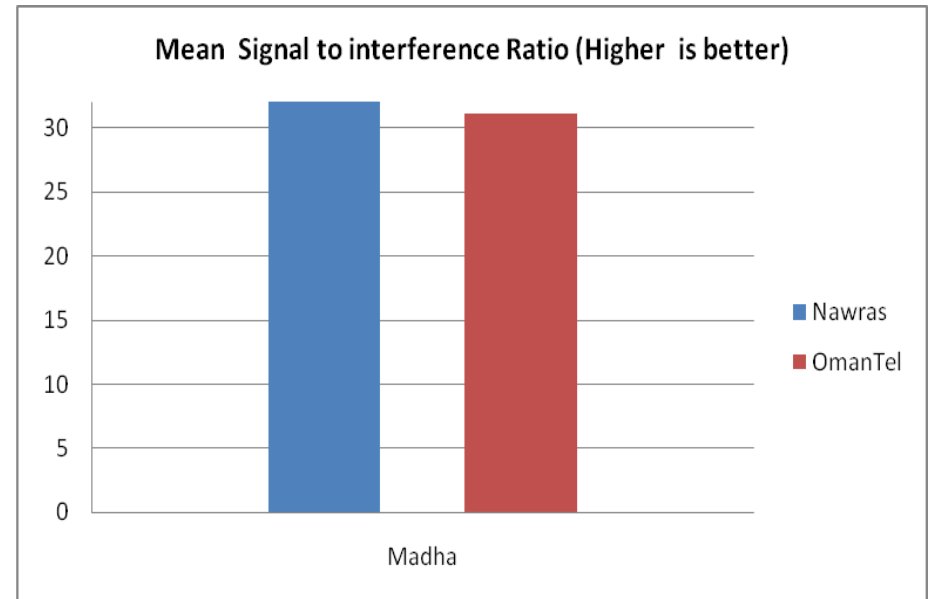
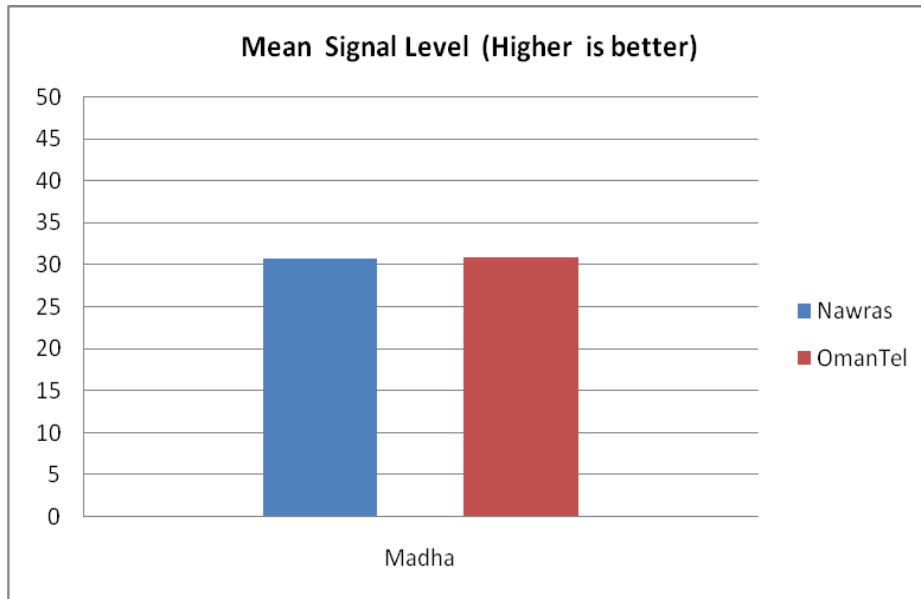
Drive Test Results of Received Signal Level from OmanTel Network in Madha:

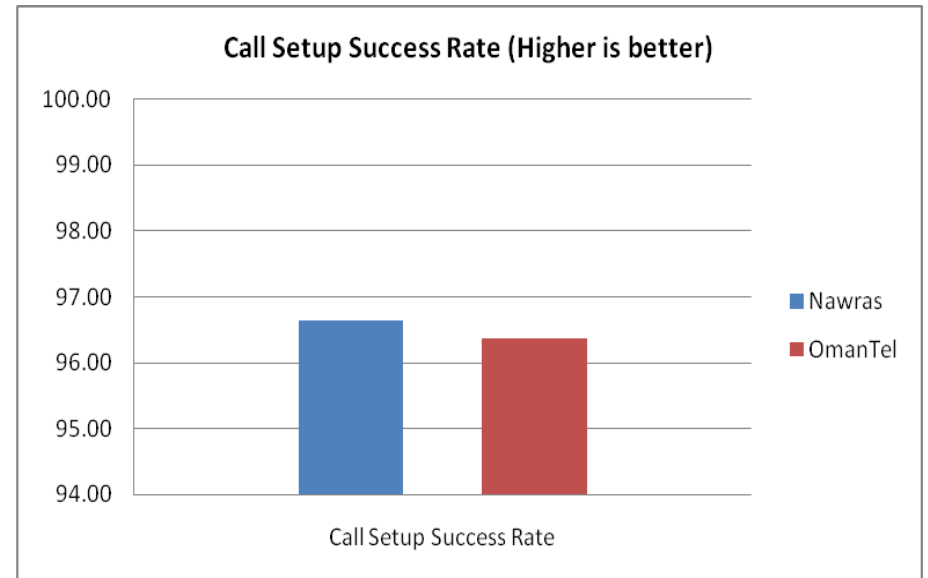
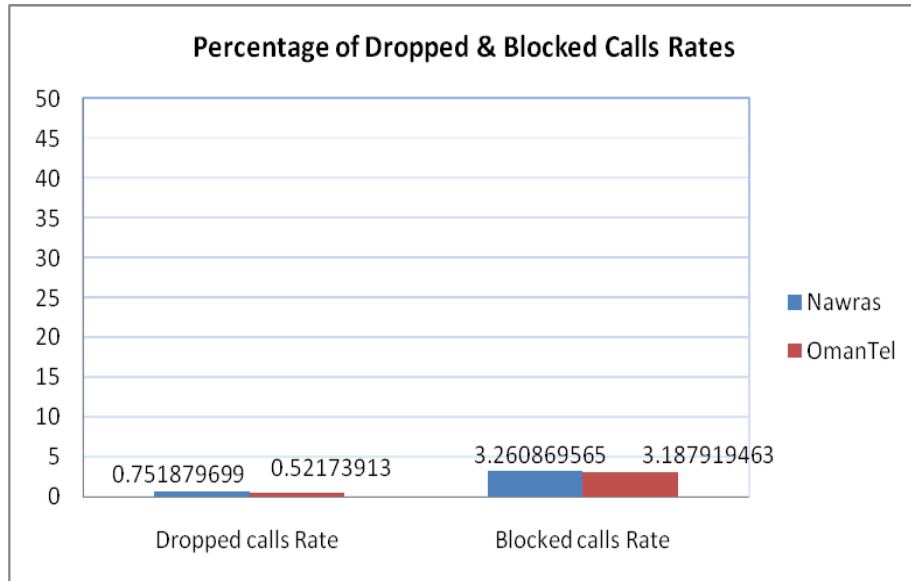


Drive Test Results of Received Signal Level from [Nawras](#) Network in Madha:



## QoS Key Performance Indicators in the wilayat's of Madha





|                                    | <b>Nawras</b> | <b>OmanTel</b> |
|------------------------------------|---------------|----------------|
| <b>Percentage of Dropped calls</b> | 0.75%         | 0.52%          |
| <b>Percentage of Blocked calls</b> | 3.26%         | 3.18%          |
| <b>Call Setup Success Rate</b>     | 96.64%        | 96.37%         |